

First Report of *Cladosporium colocasiae* Causing Leaf Spot on Taro (*Colocasia esculenta*) in Mexico

A. Vásquez-López, Instituto Politécnico Nacional, CIIDIR, Unidad Oaxaca, Santa Cruz Xoxocotlán, 71230, Oaxaca, Mexico; **R. E. Palacios-Torres**, Universidad del Papaloapan, Instituto de Agroingeniería, Loma Bonita, 68400, Oaxaca, Mexico; **L. B. Montiel-Frausto**, Instituto Politécnico Nacional, CIIDIR, Unidad Oaxaca, Santa Cruz Xoxocotlán, 71230, Oaxaca, Mexico; **V. R. Medero Vega**, Instituto de Investigaciones de Viandas Tropicales (INIVIT), Santo Domingo, 53000, Villa Clara, Cuba; **N. B. Lima**, CONICET, Instituto de Patología Vegetal, CIAP-INTA, X5020ICA, Córdoba, Argentina; **M. Camacho-Tapia**, Universidad Autónoma Chapingo, Laboratorio Nacional de Investigación y Servicio Agroalimentario y Forestal, Texcoco, 56230, Estado de México, Mexico; **J. M. Tovar-Pedraza**, Centro de Investigación en Alimentación y Desarrollo, Coordinación Culiacán, Laboratorio de Fitopatología, 80110, Culiacán, Sinaloa, Mexico

In September 2017, symptoms of leaf spot were observed on approx. 80% of taro (*Colocasia esculenta* var. *antiquorum*) plants at a commercial field located in San Juan Bautista Tuxtepec, Oaxaca, Mexico. Lesions on diseased leaves were dark brown and oval to irregular, sometimes coalesced to cover large areas of the leaf surface. To isolate the fungus, small fragments from adjacent tissue to lesions of symptomatic leaves were excised and surface disinfested by immersion in a 1% NaOCl for 2 min, rinsed three times in sterile distilled water, dried in blotter paper, and placed in Petri plates containing potato dextrose agar (PDA) amended with ampicillin (20 mg/l) and rifampicin (20 mg/l). The plates were incubated at 25°C under constant white light for 8 days and then mycelial plugs were aseptically transferred to fresh PDA medium. Pure

cultures were obtained by monoconidial isolation technique. Colonies on PDA exhibited aerial mycelium sparse, grey-olivaceous to dark-olivaceous, and with sporulation profuse. Conidiophores were solitary, erect, straight or slightly flexuous, cylindrical-oblong, olivaceous-brown, nodulose, usually unbranched, and measuring up to 650 μm long. Conidia catenate in branched chains, ellipsoidal to cylindrical, smooth, aseptate or 1–2-septate, olivaceous-brown, 9 to 18 \times 5 to 8 μm . Based on morphological characteristics, the fungus was identified as *Cladosporium colocasiae* (Bensch et al. 2012; García and Moya 2015). A representative isolate was deposited in the Culture Collection of Phytopathogenic Fungi at the Chapingo Autonomous University as UACH 291. For molecular identification, the internal transcribed spacer (ITS) region, and part of the translation elongation factor 1- α (EF1- α) gene were amplified by PCR, and sequenced using the primer sets ITS5/ITS4 (White et al. 1990) and EF1-728F/EF1-986R (Carbone and Kohn 1999), respectively. The sequences were deposited in GenBank (Accession numbers ITS:MH191366 and EF1- α :MH191367). A phylogenetic analysis using Bayesian inference and including published ITS and EF1- α sequence dataset for *C. colocasiae* and other *Cladosporium* species was performed. The phylogenetic analysis resulted in a well-supported clade grouped with the type species of *C. colocasiae*. The pathogenicity of the fungus was verified on taro plants growing in a greenhouse. Two leaves from each of five 5-month-old taro plants were sprayed with a conidial suspension (10^4 spores/ml). Five leaves were mock inoculated with distilled water as a control. All plants were covered for 48 h with a plastic bag to keep moisture and then were maintained in a greenhouse at temperatures ranging from 25 to 32°C for 15 days. The pathogenicity test was performed twice. Symptoms of leaf spots were observed after 10 days on all leaves inoculated with conidial suspensions, while control leaves remained symptomless. Koch's postulates were fulfilled when the pathogen was re-isolated 100% from the diseased leaves. *Cladosporium colocasiae* has been reported on *Colocasia* spp. in North

America (USA), Caribbean islands, South America, Europe, as well as widely distributed in Africa, Asia, and Australasia (Bensch et al. 2012; Farr and Rossman 2018). To our knowledge, this is the first report of *C. colocasiae* causing leaf spot on taro in Mexico. The occurrence of this pathogen presents a threat to the production of taro in this area of southeastern Mexico, and therefore, effective management strategies should be implemented.

References:

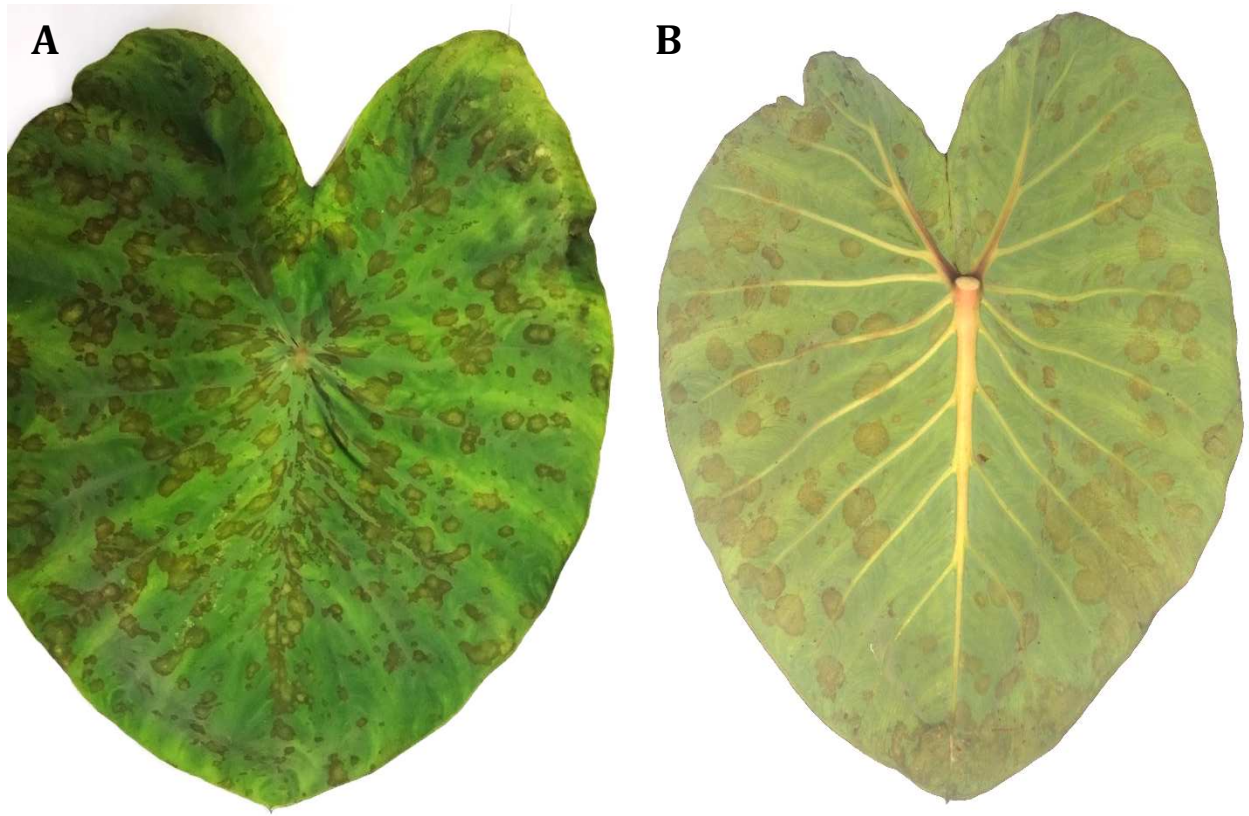
Bensch, K. et al. 2012. *Stud Mycol.* 72(1): 1–401.

Carbone, I., and Kohn, L. M. 1999. *Mycologia* 91:553.

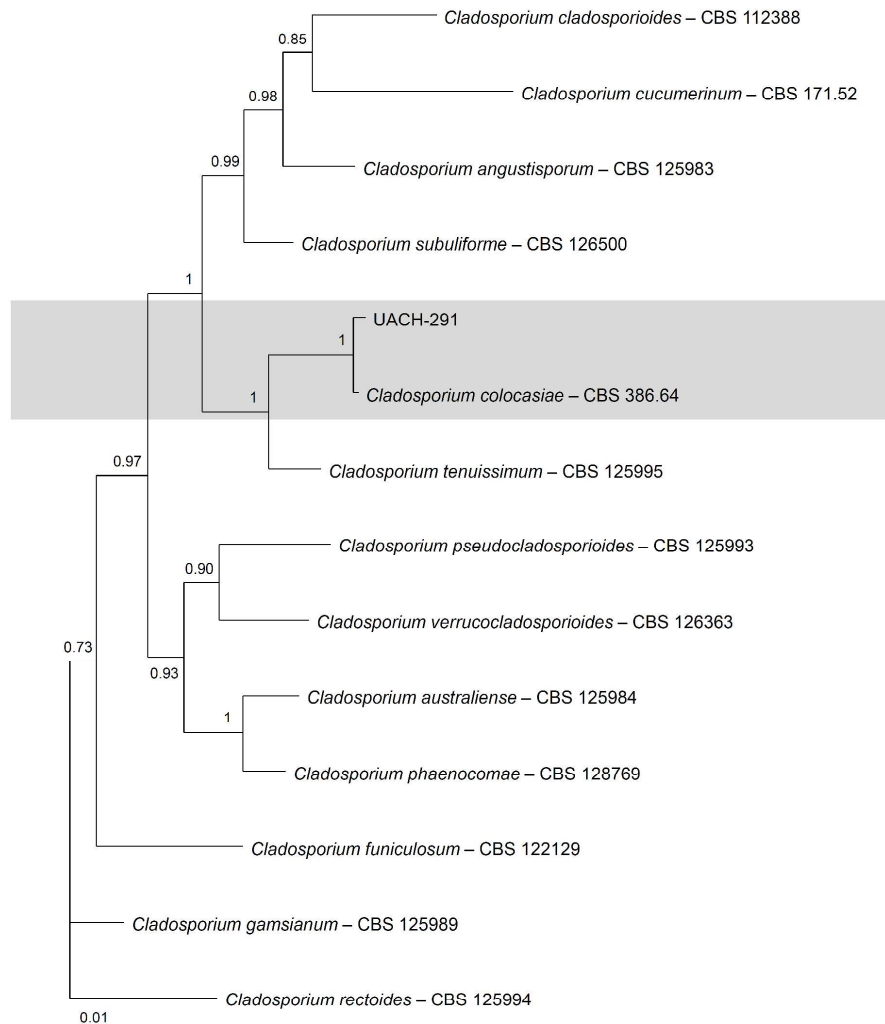
Farr, D. F., and Rossman, A. Y. 2018. Fungal Databases, Syst. Mycol. Microbiol. Lab., Online publication. ARS, USDA. Retrieved March 15, 2018.

García, S. and Moya, J. D. 2015. *Rev APF* 4(1): 33-36.

White, T. J., et al. 1990. Page 315 in: *PCR Protocols: A Guide to Methods and Applications.* Academic Press, San Diego.



Symptoms of leaf spot on taro (*Colocasia esculenta*) caused by *Cladosporium colocasiae*. A. Lesions on adaxial surface. **B.** Lesions on abaxial surface.



Bayesian tree based on phylogenetic analysis of combined sequence dataset of ITS region and part of the translation elongation factor 1- α (EF1- α) gene. The tree shows the phylogenetic relationships of *Cladosporium* species. Culture accession numbers are listed, and the tree is rooted to *Cladosporium rectoides*. The scale bar indicates the number of expected changes per site.